

HONGPU GONIOPHOTOMETERS SYSTEM TEST REPORT

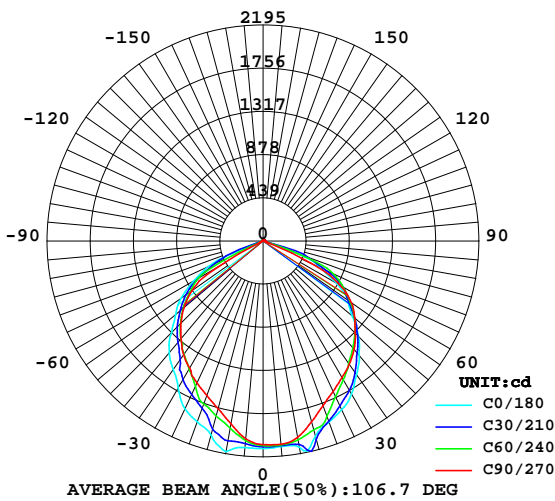
LUMINAIRE PHOTOMETRIC TEST REPORT

Report number:

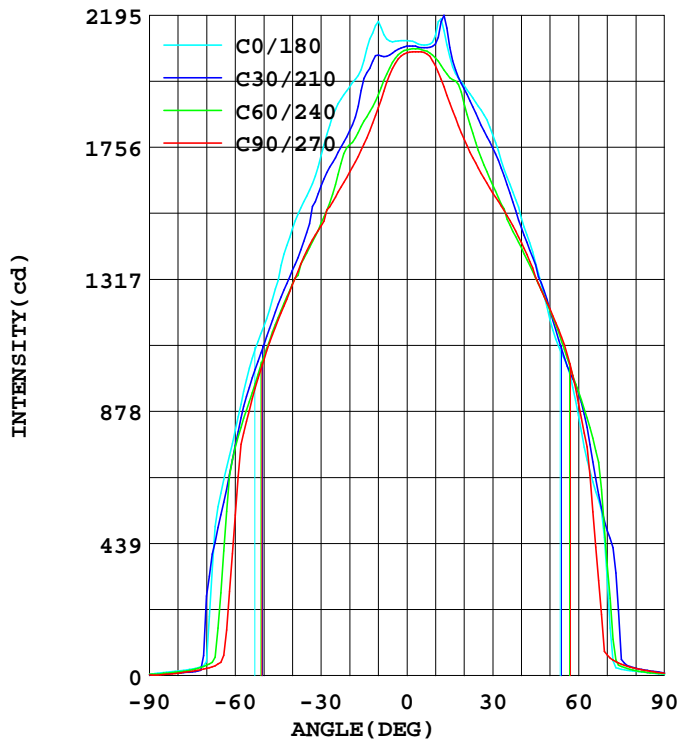
MANUFACTURER:	Address:	
NAME:	TYPE:	WEIGHT:
SPECIFICATION:	DIMENSION:	SERIAL No.:

DATA OF LAMP		PHOTOMETRIC DATA			
MODEL		Imax(cd)	2195	S/MH(C0/180)	1.21
NOMINAL POWER(W)	48	EFFICIENCY(%)	100.0	S/MH(C90/270)	1.09
RATED VOLTAGE(V)	220	TOTAL FLUX(lm)	4943.3	Voltage(V)	219.8
NOMINAL FLUX(lm)	4943.3	EFFICIENCY(lm/W)	101.3	Current(A)	0.229
LAMPS QUANTITY	1	η up(%)	1.1	Power(W)	48.77
TEST VOLTAGE(V)	219.8	η down(%)	98.9	Power Factor(PF)	0.967

LUMINOUS INTENSITY DISTRIBUTION



LUMINOUS INTENSITY DISTRIBUTION



Test System:HOPOO HPG1900
 Temperature:25.3DEG
 Operators:
 Test Date:2014年04月09日

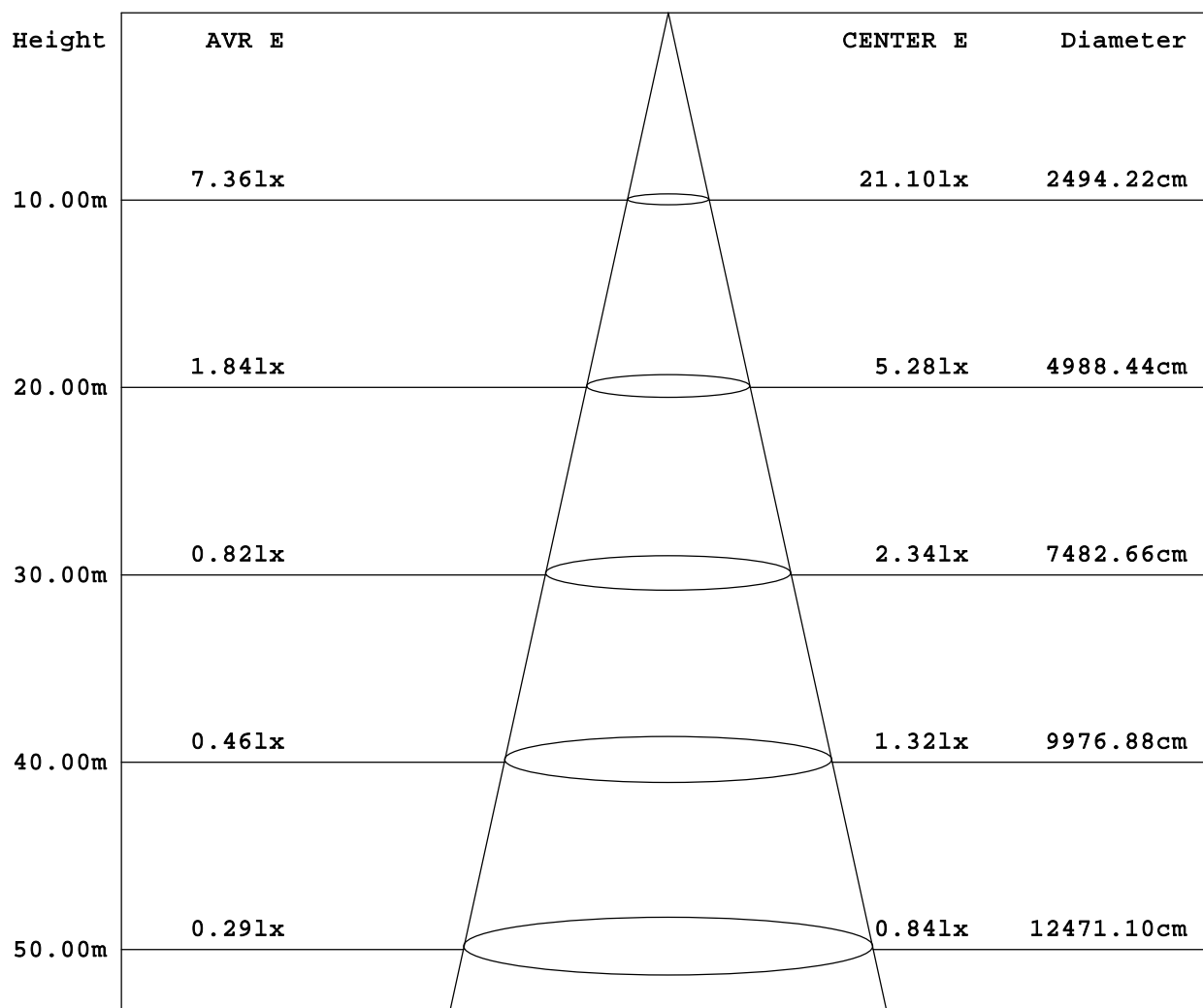
Test Set: 5.0deg/s C-Gamma (TYPE C)
 Humidity:65.0%
 Test Distance:6.000 m
 Remarks:

HONGPU GONIOPHOTOMETERS SYSTEM TEST REPORT

AVERAGE E Figure

Report number:

MANUFACTURER:	Address:	
NAME:	TYPE:	WEIGHT:
SPECIFICATION:	DIMENSION:	SERIAL No.:



Angle:102.6deg

Test System:HOPOO HPG1900
 Temperature:25.3DEG
 Operators:
 Test Date:2014年04月09日

Test Set: 5.0deg/s C-Gamma (TYPE C)
 Humidity:65.0%
 Test Distance:6.000 m
 Remarks:

HONGPU GONIOPHOTOMETERS SYSTEM TEST REPORT

ZONAL FLUX DIAGRAM

Report number:

MANUFACTURER:	Address:	
NAME:	TYPE:	WEIGHT:
SPECIFICATION:	DIMENSION:	SERIAL No.:

γ	C0	C45	C90	C135	C180	C225	C270	C315	γ	Φ zone	Φ total
5.0	2106	2054	2018	2029	2096	2084	2073	2057	0- 5	49.45	49.45
10.0	2174	1997	1888	1965	2127	2076	2027	2040	5- 10	146.0	195.4
15.0	2045	1914	1767	1905	2057	2038	1903	1973	10- 15	236.7	432.2
20.0	1957	1787	1673	1785	1961	1925	1783	1877	15- 20	309.8	742.1
25.0	1882	1676	1590	1661	1892	1798	1687	1734	20- 25	372.7	1115
30.0	1729	1566	1495	1563	1798	1693	1604	1621	25- 30	422.0	1537
35.0	1594	1438	1412	1452	1656	1574	1529	1501	30- 35	458.6	1996
40.0	1484	1324	1298	1334	1519	1455	1439	1390	35- 40	480.6	2476
45.0	1313	1213	1183	1219	1371	1344	1324	1281	40- 45	490.3	2967
50.0	1161	1079	1048	1090	1183	1215	1218	1164	45- 50	483.1	3450
55.0	1022	934.5	881.8	949.7	1052	1070	1099	1037	50- 55	460.4	3910
60.0	816.8	762.1	533.3	788.5	864.3	941.5	905.3	890.4	55- 60	417.5	4328
65.0	605.5	405.2	44.53	459.2	643.8	749.4	544.6	704.8	60- 65	321.5	4649
70.0	46.58	149.7	23.86	200.7	318.8	422.8	69.11	370.7	65- 70	177.6	4827
75.0	21.74	16.11	14.58	17.78	21.20	41.95	37.69	28.58	70- 75	42.75	4870
80.0	15.15	10.26	8.172	11.08	14.25	20.62	23.72	16.30	75- 80	9.700	4879
85.0	10.00	6.606	3.564	6.840	8.820	12.65	14.76	10.80	80- 85	6.144	4886
90.0	5.040	3.726	2.232	3.438	3.780	7.650	8.136	6.516	85- 90	3.562	4889
95.0	5.256	4.248	2.952	3.924	4.176	4.860	5.508	4.842	90- 95	2.412	4892
100.0	5.724	4.896	3.744	4.536	5.076	5.472	5.940	5.472	95-100	2.632	4894
105.0	6.336	5.652	4.644	5.274	6.084	6.192	6.516	6.264	100-105	2.968	4897
110.0	7.056	6.426	5.580	6.030	7.128	7.038	7.236	7.110	105-110	3.321	4900
115.0	7.776	7.128	6.480	6.768	8.064	7.830	8.064	7.920	110-115	3.626	4904
120.0	8.388	7.794	7.272	7.416	8.964	8.604	8.892	8.694	115-120	3.848	4908
125.0	9.000	8.496	7.956	8.118	9.792	9.306	9.612	9.431	120-125	3.992	4912
130.0	9.612	9.216	8.712	8.820	10.51	10.02	10.26	10.18	125-130	4.062	4916
135.0	10.29	9.972	9.504	9.558	11.30	10.78	10.90	10.90	130-135	4.069	4920
140.0	11.01	10.79	10.36	10.38	12.06	11.53	11.66	11.62	135-140	4.010	4924
145.0	11.70	11.62	11.23	11.23	12.85	12.29	12.38	12.36	140-145	3.876	4928
150.0	12.42	12.45	12.02	12.05	13.57	13.04	13.14	13.08	145-150	3.648	4932
155.0	13.21	13.24	12.92	12.83	14.25	13.77	13.89	13.77	150-155	3.329	4935
160.0	13.96	13.89	13.68	13.53	14.86	14.34	14.61	14.32	155-160	2.906	4938
165.0	14.61	14.43	14.32	14.07	15.37	14.76	15.12	14.68	160-165	2.375	4940
170.0	15.12	14.79	14.76	14.47	15.66	15.04	15.40	14.94	165-170	1.757	4942
175.0	15.48	15.08	15.04	14.81	15.80	15.22	15.55	15.04	170-175	1.079	4943
180.0	15.73	15.24	15.33	15.01	15.91	15.28	15.51	15.04	175-180	0.364	4943
DEG	LUMINOUS INTENSITY:cd									UNIT:lm	

Test System:HOPOO HPG1900
 Temperature:25.3DEG
 Operators:
 Test Date:2014年04月09日

Test Set: 5.0deg/s C-Gamma (TYPE C)
 Humidity:65.0%
 Test Distance:6.000 m
 Remarks:

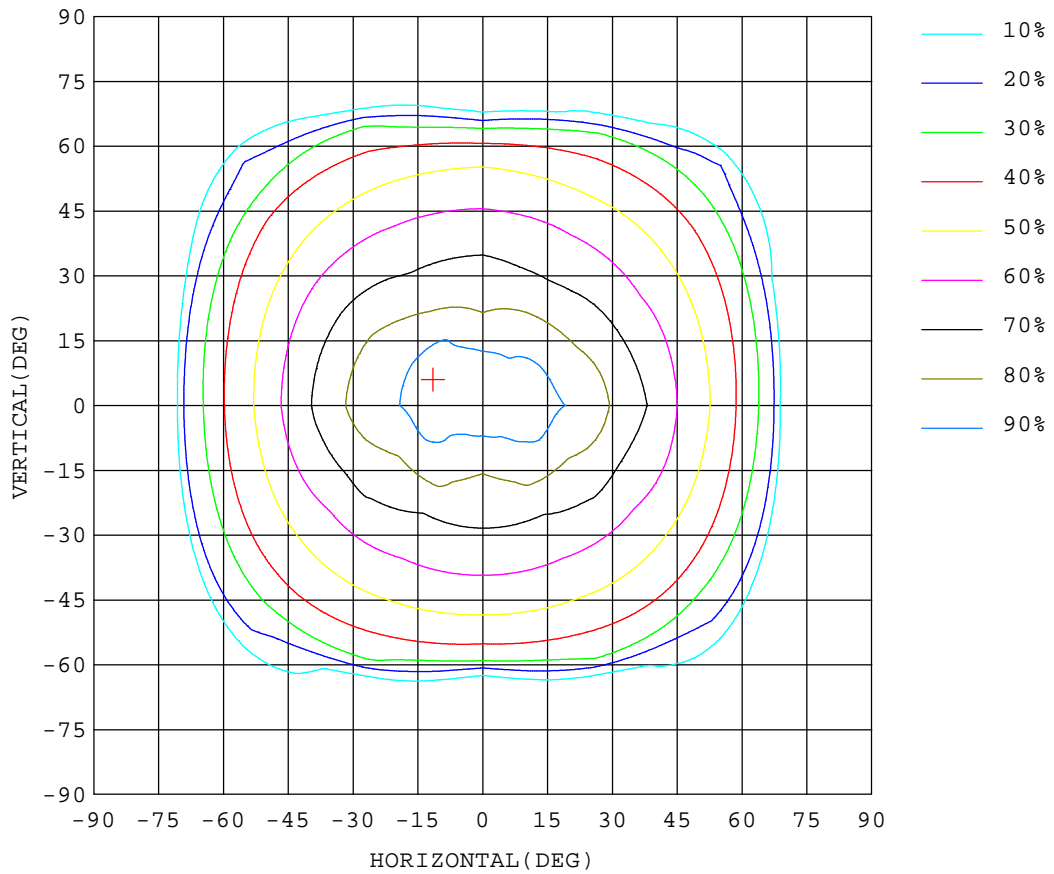
HONGPU GONIOPHOTOMETERS SYSTEM TEST REPORT

ISOCANDELA DIAGRAM

Report number:

MANUFACTURER:	Address:	
NAME:	TYPE:	WEIGHT:
SPECIFICATION:	DIMENSION:	SERIAL No.:

UNIT: cd



Test System:HOPOO HPG1900
 Temperature:25.3DEG
 Operators:
 Test Date:2014年04月09日

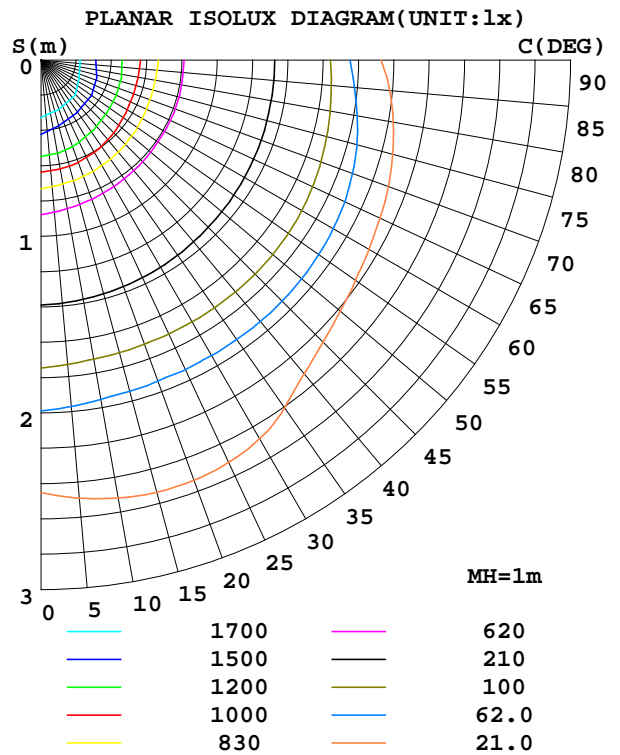
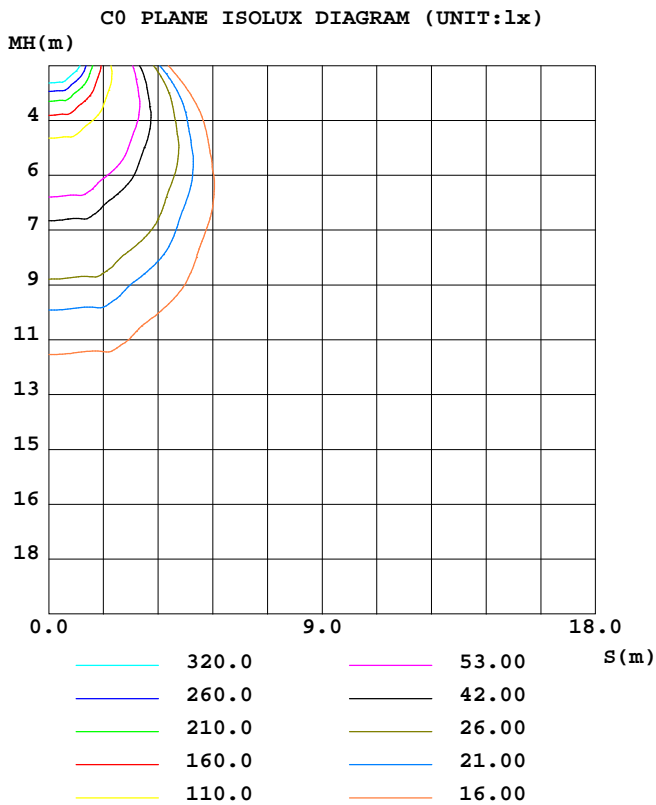
Test Set: 5.0deg/s C-Gamma (TYPE C)
 Humidity:65.0%
 Test Distance:6.000 m
 Remarks:

HONGPU GONIOPHOTOMETERS SYSTEM TEST REPORT

ISOLUX DIAGRAM

Report number:

MANUFACTURER:	Address:	
NAME:	TYPE:	WEIGHT:
SPECIFICATION:	DIMENSION:	SERIAL No.:



Test System:HOPOO HPG1900
 Temperature:25.3DEG
 Operators:
 Test Date:2014年04月09日

Test Set: 5.0deg/s C-Gamma (TYPE C)
 Humidity:65.0%
 Test Distance:6.000 m
 Remarks:

HONGPU GONIOPHOTOMETERS SYSTEM TEST REPORT

LUMINOUS DISTRIBUTION INTENSITY DATA

Report number:

MANUFACTURER:	Address:	
NAME:	TYPE:	WEIGHT:
SPECIFICATION:	DIMENSION:	SERIAL No.:

UNIT: cd

γ (DEG)	C (DEG)											
	0	30	60	90	120	150	180	210	240	270	300	330
0.0	2110	2092	2080	2070	2063	2058	2110	2092	2080	2070	2063	2058
5.0	2106	2069	2038	2018	2024	2035	2096	2087	2081	2073	2062	2053
10.0	2174	2063	1931	1888	1918	2013	2127	2099	2053	2027	2017	2063
15.0	2045	1985	1843	1767	1823	1987	2057	2089	1987	1903	1923	2022
20.0	1957	1810	1764	1673	1770	1800	1961	1950	1900	1783	1893	1862
25.0	1882	1721	1631	1590	1613	1708	1892	1851	1745	1687	1708	1761
30.0	1729	1627	1504	1495	1499	1628	1798	1754	1631	1604	1580	1663
35.0	1594	1472	1405	1412	1403	1501	1656	1632	1516	1529	1473	1530
40.0	1484	1346	1301	1298	1301	1367	1519	1488	1422	1439	1384	1395
45.0	1313	1235	1190	1183	1193	1245	1371	1365	1323	1324	1284	1278
50.0	1161	1098	1061	1048	1070	1109	1183	1216	1214	1218	1169	1159
55.0	1022	958	911	882	927	973	1052	1057	1083	1099	1042	1031
60.0	817	766	759	533	767	811	864	939	944	905	901	880
65.0	606	535	275	44.5	319	599	644	710	789	545	731	679
70.0	46.5	265	34.5	23.8	36.3	365	319	481	364	69.1	259	483
75.0	21.7	12.5	19.6	14.5	20.8	14.6	21.2	53.4	30.4	37.6	27.6	29.5
80.0	15.1	8.67	11.8	8.17	12.6	9.50	14.2	24.6	16.6	23.7	15.6	16.9
85.0	10.0	5.65	7.56	3.56	7.84	5.83	8.82	15.8	9.50	14.7	9.18	12.4
90.0	5.04	2.55	4.89	2.23	4.71	2.16	3.78	9.39	5.90	8.13	5.29	7.74
95.0	5.25	3.27	5.22	2.95	5.00	2.84	4.17	6.30	3.42	5.50	3.42	6.26
100.0	5.72	4.10	5.68	3.74	5.47	3.60	5.07	6.69	4.24	5.94	4.21	6.73
105.0	6.33	4.96	6.33	4.64	6.08	4.46	6.08	7.27	5.11	6.51	5.14	7.38
110.0	7.05	5.83	7.02	5.58	6.76	5.29	7.12	7.99	6.08	7.23	6.12	8.09
115.0	7.77	6.62	7.63	6.48	7.41	6.12	8.06	8.67	6.98	8.06	7.05	8.78
120.0	8.38	7.38	8.20	7.27	7.95	6.87	8.96	9.32	7.88	8.89	7.95	9.43
125.0	9.00	8.13	8.85	7.95	8.56	7.66	9.79	9.97	8.63	9.61	8.74	10.1
130.0	9.61	8.89	9.53	8.71	9.21	8.42	10.5	10.6	9.43	10.2	9.57	10.8
135.0	10.2	9.72	10.2	9.50	9.97	9.14	11.3	11.3	10.2	10.9	10.3	11.4
140.0	11.0	10.5	11.0	10.3	10.7	10.0	12.0	11.9	11.0	11.6	11.1	12.1
145.0	11.7	11.4	11.8	11.2	11.6	10.8	12.8	12.7	11.8	12.3	11.8	12.8
150.0	12.4	12.3	12.5	12.0	12.4	11.7	13.5	13.3	12.7	13.1	12.6	13.5
155.0	13.2	13.1	13.3	12.9	13.1	12.4	14.2	14.0	13.5	13.8	13.4	14.1
160.0	13.9	13.7	14.0	13.6	13.8	13.1	14.8	14.5	14.1	14.6	14.0	14.5
165.0	14.6	14.3	14.5	14.3	14.4	13.7	15.3	14.9	14.5	15.1	14.4	14.9
170.0	15.1	14.7	14.8	14.7	14.7	14.2	15.6	15.2	14.8	15.4	14.7	15.1
175.0	15.4	15.0	15.1	15.0	15.0	14.6	15.8	15.4	15.0	15.5	14.9	15.1
180.0	15.7	15.2	15.2	15.3	15.1	14.9	15.9	15.4	15.1	15.5	14.9	15.1

Test System:HOPOO HPG1900
 Temperature:25.3DEG
 Operators:
 Test Date:2014年04月09日

Test Set: 5.0deg/s C-Gamma (TYPE C)
 Humidity:65.0%
 Test Distance:6.000 m
 Remarks: