

HONGPU GONIOPHOTOMETERS SYSTEM TEST REPORT

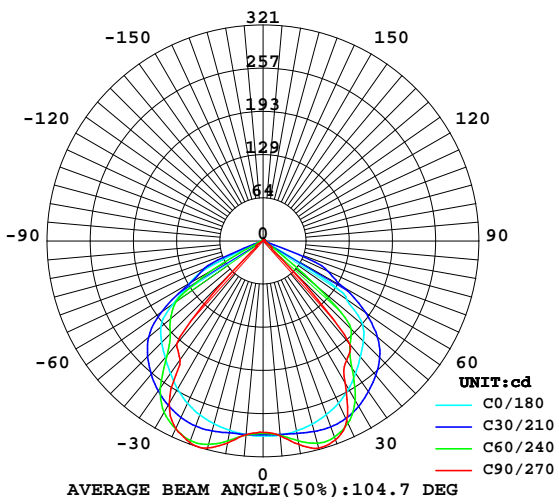
LUMINAIRE PHOTOMETRIC TEST REPORT

Report number:

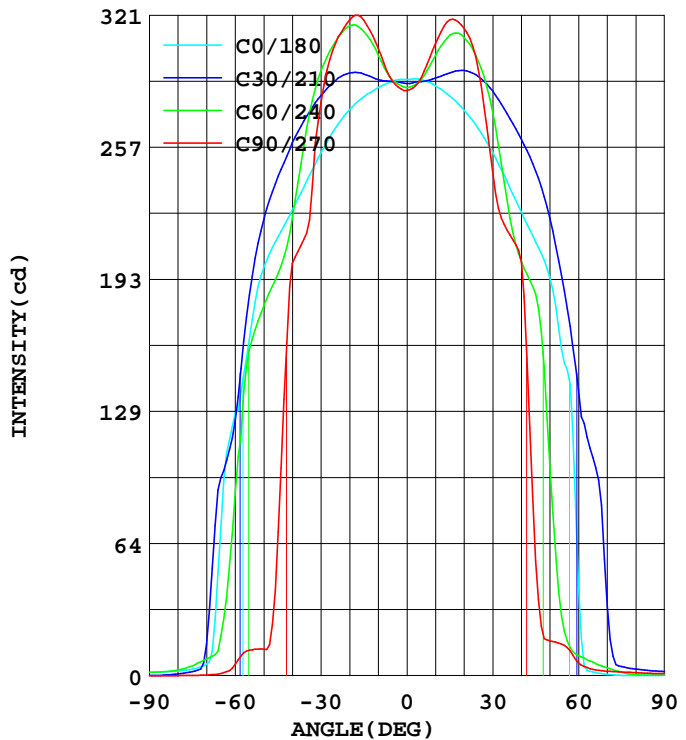
MANUFACTURER:	Address:	
NAME:	TYPE:	WEIGHT:
SPECIFICATION:	DIMENSION:	SERIAL No.:

DATA OF LAMP		PHOTOMETRIC DATA			
MODEL		Imax(cd)	321.3	S/MH(C0/180)	1.30
NOMINAL POWER(W)	10	EFFICIENCY(%)	100.0	S/MH(C90/270)	1.26
RATED VOLTAGE(V)	220	TOTAL FLUX(lm)	691.96	Voltage(V)	219.8
NOMINAL FLUX(lm)	692.0	EFFICIENCY(lm/W)	68.2	Current(A)	0.093
LAMPS QUANTITY	1	η up(%)	1.1	Power(W)	10.14
TEST VOLTAGE(V)	219.9	η down(%)	98.9	Power Factor(PF)	0.493

LUMINOUS INTENSITY DISTRIBUTION



LUMINOUS INTENSITY DISTRIBUTION



Test System:HOPOO HPG1900
 Temperature:25.3DEG
 Operators:
 Test Date:2014年04月09日

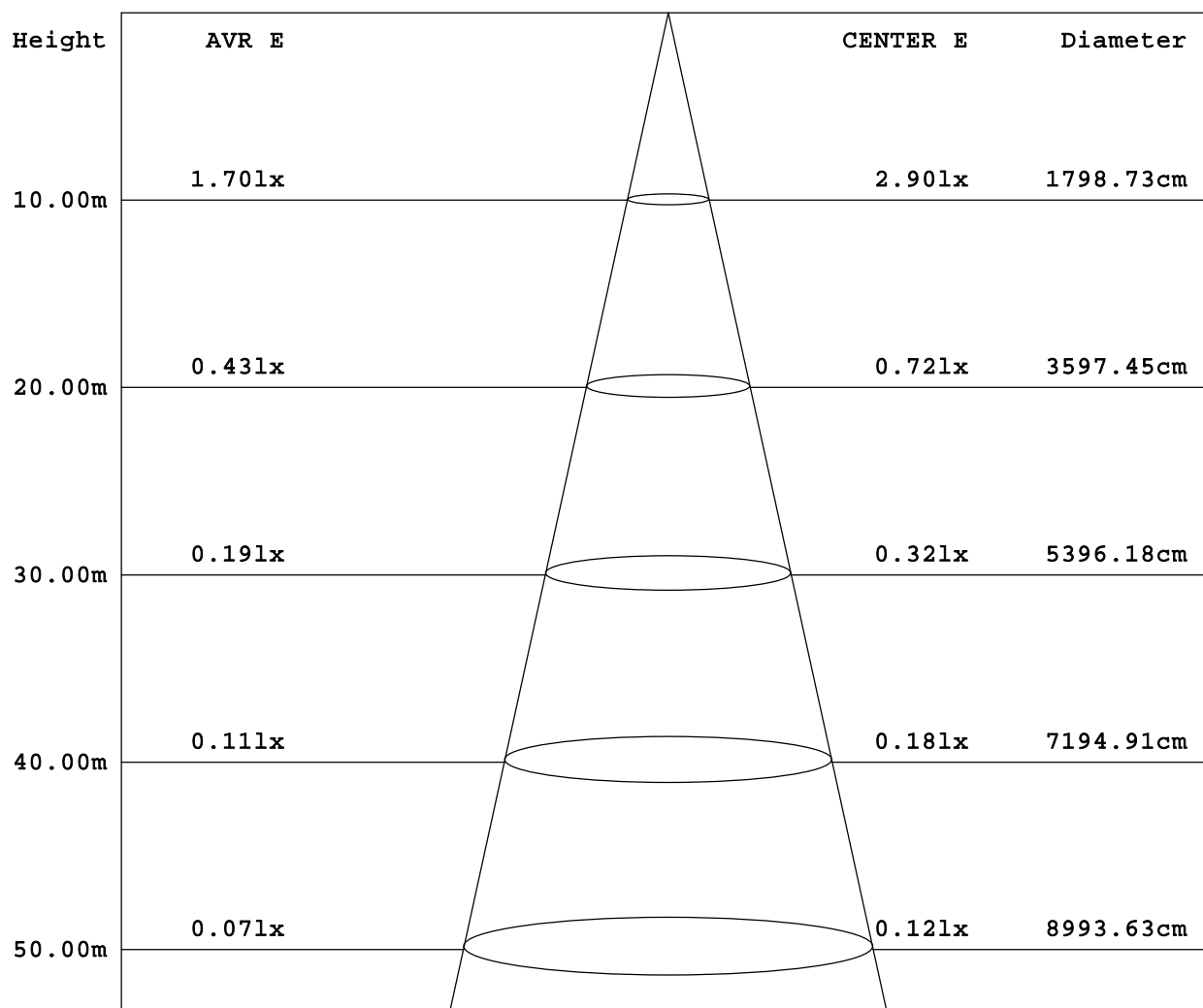
Test Set: 5.0deg/s C-Gamma (TYPE C)
 Humidity:65.0%
 Test Distance:6.000 m
 Remarks:

HONGPU GONIOPHOTOMETERS SYSTEM TEST REPORT

AVERAGE E Figure

Report number:

MANUFACTURER:	Address:	
NAME:	TYPE:	WEIGHT:
SPECIFICATION:	DIMENSION:	SERIAL No.:



Angle: 83.9deg

Test System:HOPOO HPG1900
 Temperature:25.3DEG
 Operators:
 Test Date:2014年04月09日

Test Set: 5.0deg/s C-Gamma (TYPE C)
 Humidity:65.0%
 Test Distance:6.000 m
 Remarks:

HONGPU GONIOPHOTOMETERS SYSTEM TEST REPORT

ZONAL FLUX DIAGRAM

Report number:

MANUFACTURER:	Address:	
NAME:	TYPE:	WEIGHT:
SPECIFICATION:	DIMENSION:	SERIAL No.:

γ	C0	C45	C90	C135	C180	C225	C270	C315	γ	Φ zone	Φ total
5.0	289.1	289.3	289.1	285.1	289.9	289.5	290.8	286.5	0- 5	6.875	6.875
10.0	286.1	295.8	305.1	290.5	287.0	296.1	307.4	294.0	5- 10	20.92	27.79
15.0	281.7	302.9	318.7	297.1	281.9	302.3	319.0	299.5	10- 15	35.44	63.24
20.0	275.2	304.5	318.9	299.6	274.9	302.4	314.7	297.1	15- 20	49.51	112.7
25.0	266.3	298.8	307.5	294.7	266.0	295.1	294.9	287.6	20- 25	61.78	174.5
30.0	254.5	288.3	279.1	285.2	254.5	279.3	245.2	267.2	25- 30	70.99	245.5
35.0	240.6	269.2	215.3	264.9	240.5	252.3	216.7	239.3	30- 35	75.71	321.2
40.0	226.4	240.8	200.5	234.1	225.5	231.1	201.0	221.5	35- 40	78.05	399.3
45.0	213.5	219.3	69.91	218.0	211.0	215.6	56.08	201.9	40- 45	75.62	474.9
50.0	198.5	200.8	12.88	176.7	193.2	161.7	16.95	178.5	45- 50	67.86	542.7
55.0	163.6	171.9	12.31	111.0	152.1	104.3	14.72	136.6	50- 55	57.22	600.0
60.0	127.7	106.8	5.544	77.92	44.10	74.46	6.084	81.12	55- 60	41.95	641.9
65.0	72.10	57.76	1.080	56.57	1.836	56.35	2.988	49.73	60- 65	25.71	667.6
70.0	5.544	11.52	0.288	19.99	0.576	18.84	2.160	8.946	65- 70	12.35	680.0
75.0	3.132	3.402	0.072	2.538	0.144	3.060	1.728	3.096	70- 75	1.939	681.9
80.0	2.268	1.800	0	1.332	0.036	1.818	1.440	1.818	75- 80	0.951	682.9
85.0	1.800	1.044	0	0.864	0.072	1.332	1.152	1.242	80- 85	0.617	683.5
90.0	1.548	0.828	0	0.684	0.180	1.116	0.972	1.008	85- 90	0.483	684.0
95.0	1.440	0.756	0	0.666	0.324	1.044	0.936	0.990	90- 95	0.442	684.4
100.0	1.440	0.684	0	0.648	0.468	1.044	1.008	0.954	95-100	0.434	684.9
105.0	1.440	0.720	0.036	0.684	0.612	1.098	1.080	0.990	100-105	0.441	685.3
110.0	1.476	0.792	0.180	0.756	0.792	1.188	1.188	1.080	105-110	0.471	685.8
115.0	1.548	0.936	0.324	0.846	0.972	1.296	1.296	1.242	110-115	0.514	686.3
120.0	1.620	1.026	0.540	0.936	1.152	1.386	1.404	1.332	115-120	0.546	686.8
125.0	1.692	1.134	0.684	1.026	1.260	1.512	1.548	1.422	120-125	0.574	687.4
130.0	1.728	1.224	0.864	1.134	1.440	1.566	1.656	1.530	125-130	0.586	688.0
135.0	1.800	1.332	1.008	1.206	1.548	1.656	1.764	1.656	130-135	0.585	688.6
140.0	1.872	1.422	1.116	1.314	1.692	1.746	1.800	1.746	135-140	0.571	689.1
145.0	1.944	1.566	1.188	1.422	1.836	1.854	1.872	1.836	140-145	0.547	689.7
150.0	2.016	1.656	1.332	1.548	1.980	1.962	1.944	1.926	145-150	0.513	690.2
155.0	2.124	1.782	1.476	1.656	2.124	2.070	2.052	2.016	150-155	0.470	690.7
160.0	2.232	1.926	1.620	1.818	2.196	2.196	2.160	2.124	155-160	0.415	691.1
165.0	2.376	2.034	1.800	1.980	2.304	2.268	2.268	2.178	160-165	0.345	691.4
170.0	2.448	2.160	1.944	2.106	2.340	2.340	2.340	2.250	165-170	0.260	691.7
175.0	2.484	2.250	2.124	2.214	2.412	2.376	2.376	2.286	170-175	0.163	691.9
180.0	2.520	2.322	2.268	2.250	2.484	2.376	2.340	2.268	175-180	0.055	691.9
DEG	LUMINOUS INTENSITY:cd									UNIT:lm	

Test System:HOPOO HPG1900
 Temperature:25.3DEG
 Operators:
 Test Date:2014年04月09日

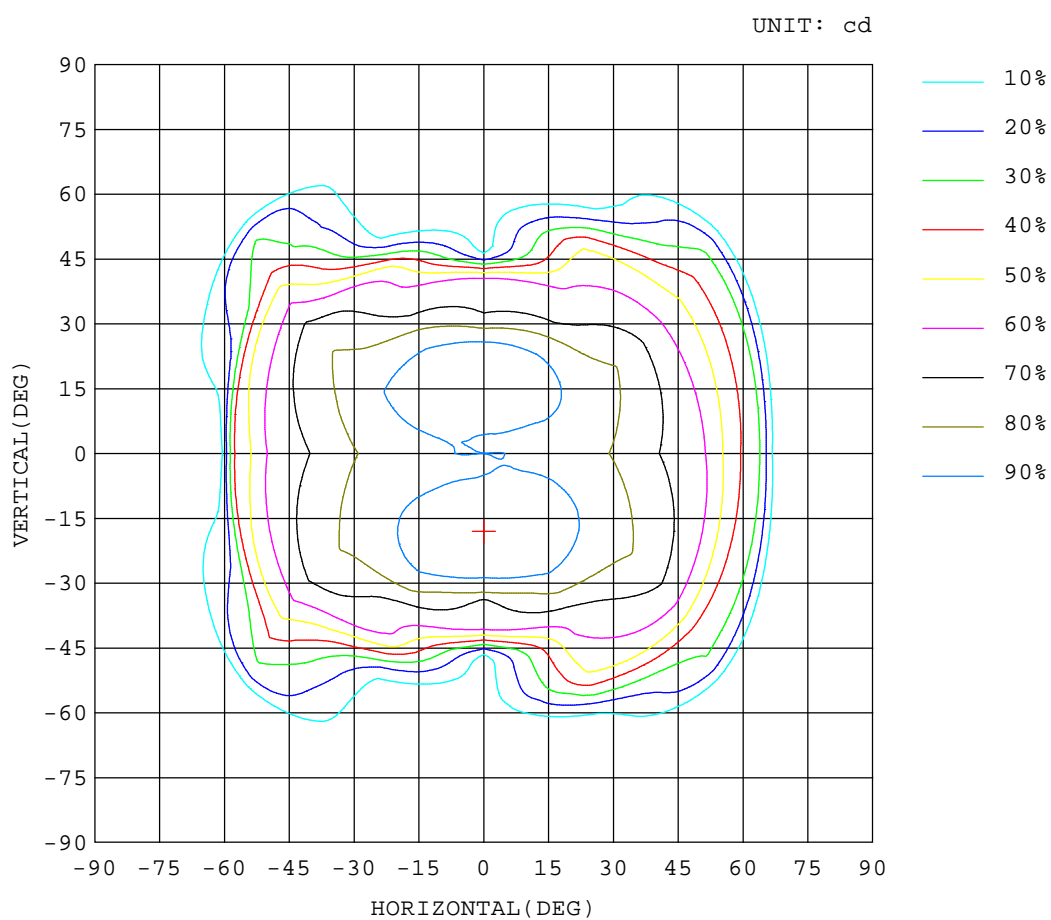
Test Set: 5.0deg/s C-Gamma (TYPE C)
 Humidity:65.0%
 Test Distance:6.000 m
 Remarks:

HONGPU GONIOPHOTOMETERS SYSTEM TEST REPORT

ISOCANDELA DIAGRAM

Report number:

MANUFACTURER:	Address:	
NAME:	TYPE:	WEIGHT:
SPECIFICATION:	DIMENSION:	SERIAL No.:



Test System:HOPOO HPG1900
 Temperature:25.3DEG
 Operators:
 Test Date:2014年04月09日

Test Set: 5.0deg/s C-Gamma (TYPE C)
 Humidity:65.0%
 Test Distance:6.000 m
 Remarks:

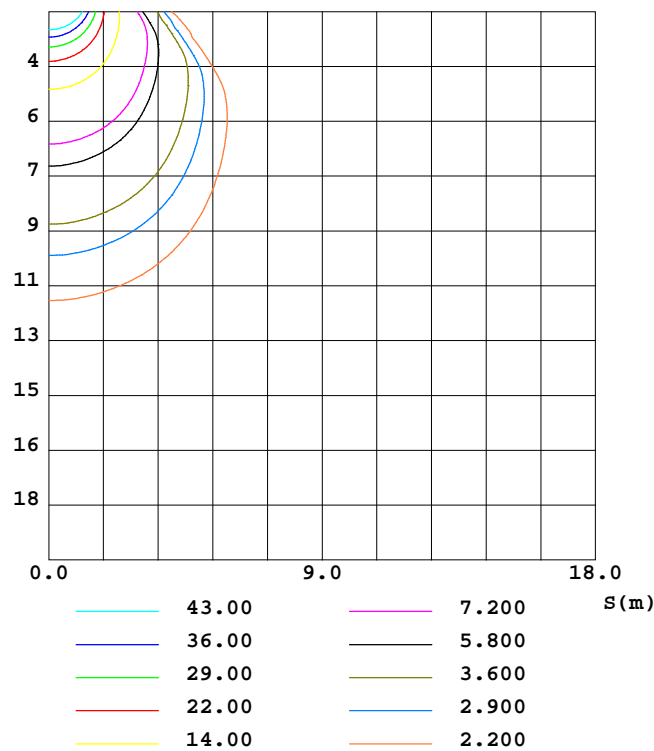
HONGPU GONIOPHOTOMETERS SYSTEM TEST REPORT

ISOLUX DIAGRAM

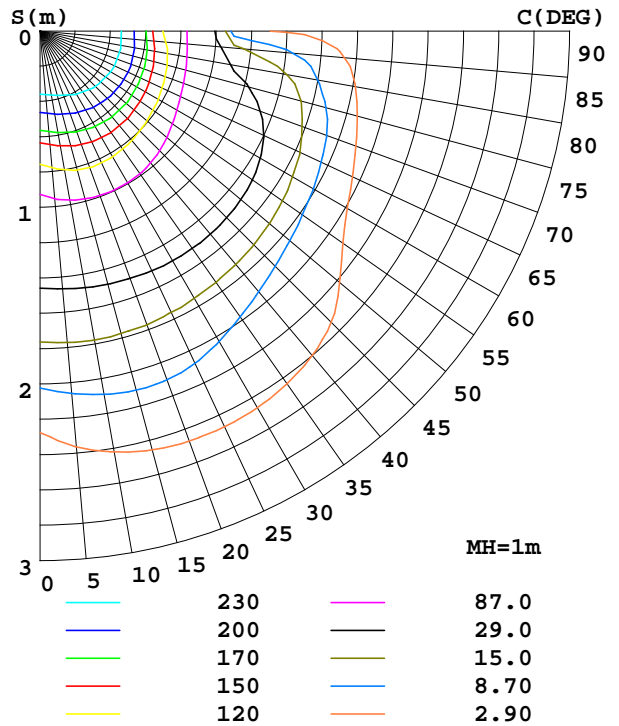
Report number:

MANUFACTURER:	Address:	
NAME:	TYPE:	WEIGHT:
SPECIFICATION:	DIMENSION:	SERIAL No.:

C0 PLANE ISOLUX DIAGRAM (UNIT:lx)



PLANAR ISOLUX DIAGRAM(UNIT:lx)



Test System:HOPOO HPG1900
 Temperature:25.3DEG
 Operators:
 Test Date:2014年04月09日

Test Set: 5.0deg/s C-Gamma (TYPE C)
 Humidity:65.0%
 Test Distance:6.000 m
 Remarks:

HONGPU GONIOPHOTOMETERS SYSTEM TEST REPORT

LUMINOUS DISTRIBUTION INTENSITY DATA

Report number:

MANUFACTURER:	Address:	
NAME:	TYPE:	WEIGHT:
SPECIFICATION:	DIMENSION:	SERIAL No.:

UNIT: cd

γ (DEG)	C (DEG)											
	0	30	60	90	120	150	180	210	240	270	300	330
0.0	290	288	286	285	284	283	290	288	286	285	284	283
5.0	289	289	290	289	287	284	290	289	290	291	289	284
10.0	286	290	302	305	297	284	287	291	302	307	301	287
15.0	282	293	313	319	309	285	282	293	312	319	310	290
20.0	275	293	316	319	313	287	275	294	310	315	305	289
25.0	266	289	308	308	306	284	266	291	299	295	293	283
30.0	255	282	294	279	293	277	255	284	274	245	261	273
35.0	241	272	266	215	262	268	241	273	231	217	218	261
40.0	226	259	222	201	213	256	226	261	201	201	199	244
45.0	214	243	196	69.9	196	240	211	246	186	56.0	185	219
50.0	199	222	180	12.8	137	217	193	222	101	16.9	168	189
55.0	164	185	159	12.3	41.9	180	152	187	21.5	14.7	111	162
60.0	128	124	89.2	5.54	15.1	141	44.1	139	9.79	6.08	34.3	128
65.0	72.1	96.2	19.2	1.08	10.1	103	1.83	106	6.55	2.98	7.56	91.9
70.0	5.54	15.0	7.99	0.29	6.87	33.1	0.58	33.9	3.78	2.16	4.71	13.1
75.0	3.13	1.98	4.82	0.07	4.06	1.00	0.14	4.46	1.65	1.72	1.98	4.21
80.0	2.26	0.86	2.73	0.00	2.26	0.40	0.04	3.16	0.47	1.44	0.61	3.02
85.0	1.80	0.22	1.87	0.00	1.58	0.14	0.07	2.41	0.25	1.15	0.22	2.26
90.0	1.54	0.07	1.58	0.00	1.36	0.00	0.18	1.98	0.25	0.97	0.18	1.83
95.0	1.44	0.07	1.44	0.00	1.29	0.04	0.32	1.80	0.29	0.94	0.29	1.69
100.0	1.44	0.11	1.26	0.00	1.15	0.14	0.47	1.76	0.32	1.00	0.29	1.62
105.0	1.44	0.25	1.18	0.04	1.08	0.29	0.61	1.76	0.43	1.08	0.36	1.62
110.0	1.47	0.40	1.18	0.18	1.08	0.43	0.79	1.76	0.61	1.18	0.50	1.65
115.0	1.54	0.58	1.29	0.32	1.15	0.54	0.97	1.83	0.76	1.29	0.72	1.76
120.0	1.62	0.68	1.36	0.54	1.22	0.65	1.15	1.87	0.90	1.40	0.86	1.80
125.0	1.69	0.83	1.44	0.68	1.29	0.76	1.26	1.94	1.08	1.54	1.00	1.83
130.0	1.72	0.94	1.51	0.86	1.36	0.90	1.44	1.94	1.18	1.65	1.18	1.87
135.0	1.80	1.04	1.62	1.00	1.40	1.00	1.54	2.01	1.29	1.76	1.33	1.98
140.0	1.87	1.18	1.65	1.11	1.51	1.11	1.69	2.05	1.44	1.80	1.44	2.05
145.0	1.94	1.36	1.76	1.18	1.58	1.26	1.83	2.16	1.54	1.87	1.54	2.12
150.0	2.01	1.51	1.80	1.33	1.69	1.40	1.98	2.23	1.69	1.94	1.62	2.23
155.0	2.12	1.69	1.87	1.47	1.76	1.54	2.12	2.30	1.83	2.05	1.72	2.30
160.0	2.23	1.83	2.01	1.62	1.90	1.72	2.19	2.41	1.98	2.16	1.87	2.37
165.0	2.37	1.94	2.12	1.80	2.08	1.87	2.30	2.44	2.08	2.26	1.94	2.41
170.0	2.44	2.08	2.23	1.94	2.19	2.01	2.34	2.52	2.16	2.34	2.05	2.44
175.0	2.48	2.16	2.34	2.12	2.30	2.12	2.41	2.52	2.23	2.37	2.12	2.44
180.0	2.52	2.26	2.37	2.26	2.34	2.16	2.48	2.48	2.26	2.34	2.12	2.41

Test System:HOPOO HPG1900
 Temperature:25.3DEG
 Operators:
 Test Date:2014年04月09日

Test Set: 5.0deg/s C-Gamma (TYPE C)
 Humidity:65.0%
 Test Distance:6.000 m
 Remarks: