

# FR Series Refrigerator/Freezer

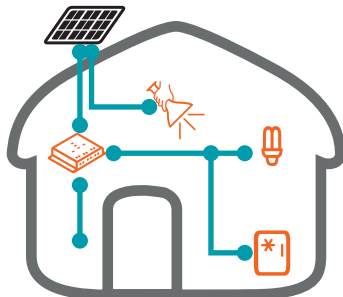
DC Refrigerator/Freezer for off-grid homes, cabins and mobile merchants



## Efficient. Mobile. Cold.

- Doesn't require an inverter
- Works with both 12/24V systems (Auto Detection)
- High-efficiency cooling
- Eco-friendly cooling agent

### Made to last in harsh environments.



The Phocos FR Series are 12/24V, battery-powered refrigerators that does not require an inverter to operate. Their maintenance-free, brushless DC compressor allows for direct operation from a battery which increases system efficiency. Energy-efficient features such as extra-thick insulation and a lockable lid make them especially suited for solar-powered applications.

The four caster glides make moving them around a breeze. The aluminum lining is easy-to-clean, there is an interior light, adjustable temperature, and a low-frost system that reduces the formation of water condensation and ice.

### Maximum Efficiency

- Direct DC operation eliminates wasted inverter energy
- Chest-style design and extra-thick insulation keeps the cold in and reduces compressor run time.

### Flexible

- Can be powered off a 12 or 24 V battery (auto detection)
- Wide temperature thermostat allows every unit to run as a refrigerator or freezer

### Low-Maintenance

- Maintenance free, brushless DC compressor
- Low-frost system reduces formation of condensation, ice and frost

### Application Examples

- Off-Grid Homes
- Cabins
- Food Trucks/Vendors
- Rural Merchants



## Technical Data

Type	FR170MP	FR240MP
Operating voltage	12/24 V DC (nominal)	
Temperature range	+3 to +43 °F/-16 to +6 °C	
Ambient temperature	+50 to +110 °F/10 to 43 °C	
PV panel size (typ./ max.)	80/160 W	100/20 W
Energy consumption at 70 °F/21 °C	90 Wh/day (fridge), 296 Wh/day (freezer)	104 Wh/day (fridge), 398 Wh/day (freezer)
Energy consumption at 90 °F/32 °C	197 Wh/day (fridge), 485 Wh/day (freezer)	218 Wh/day (fridge), 572 Wh/day (freezer)
Content (capacity)	170 l	240 l
Refrigerant	R-134a	
Door type	Top opening	
Color	White	
Wheels	Optional	
Dimensions of Cabinet (W x H x D)	34 x 29.7 x 26.7 in/914 x 755 x 680 mm	45 x 33.4 x 27 in/1144 x 849 x 684 mm
Inner Dimensions (W x H x D)	26.4 x 26.4 x 17.2 in/671 x 670 x 436 mm	35.4 x 26.4 x 17.3 in/900 x 671 x 440 mm
Weight	110 lbs/50 kg	154 lbs/70 kg